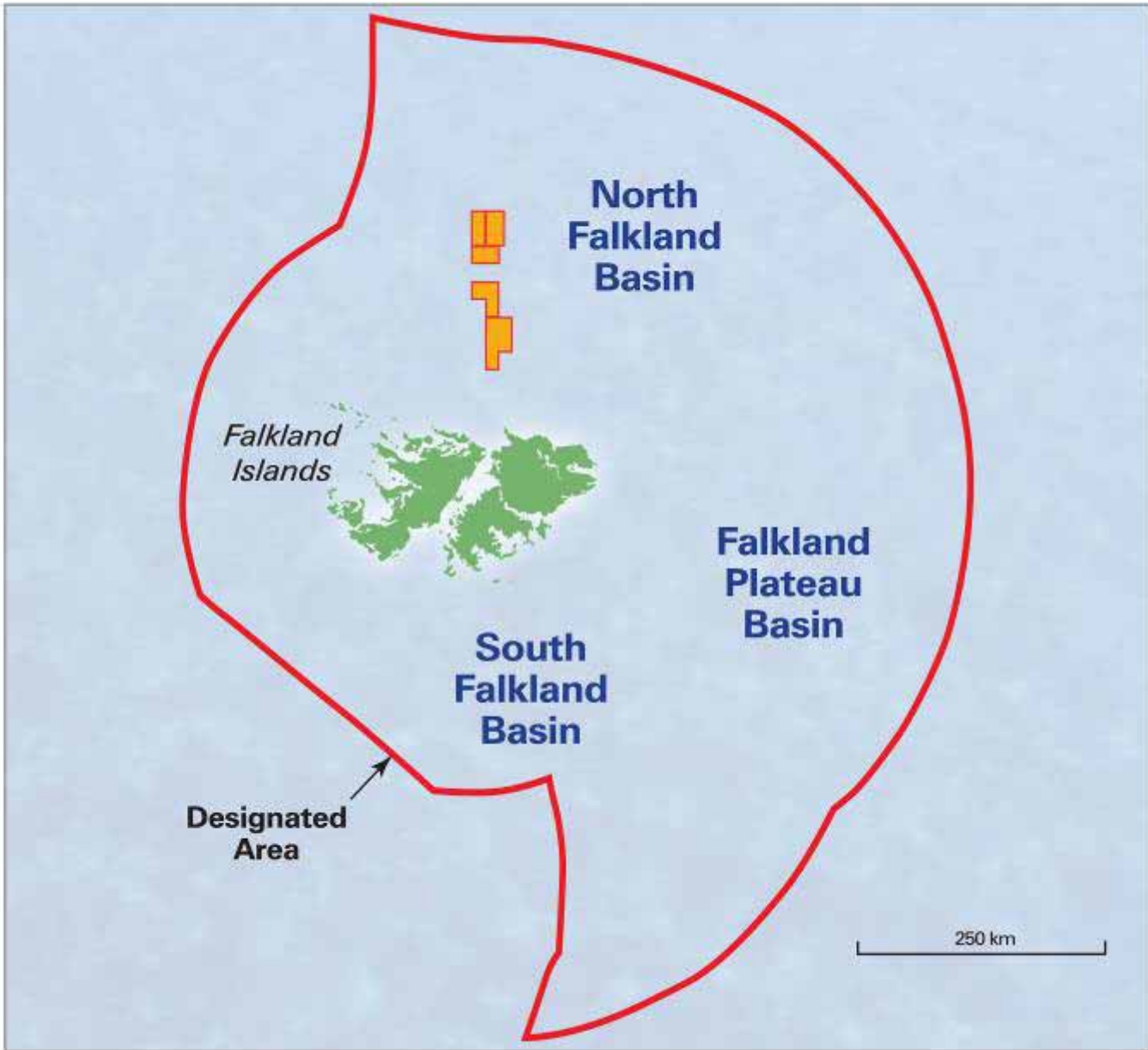


*Desire*

# **NORTH FALKLAND BASIN**

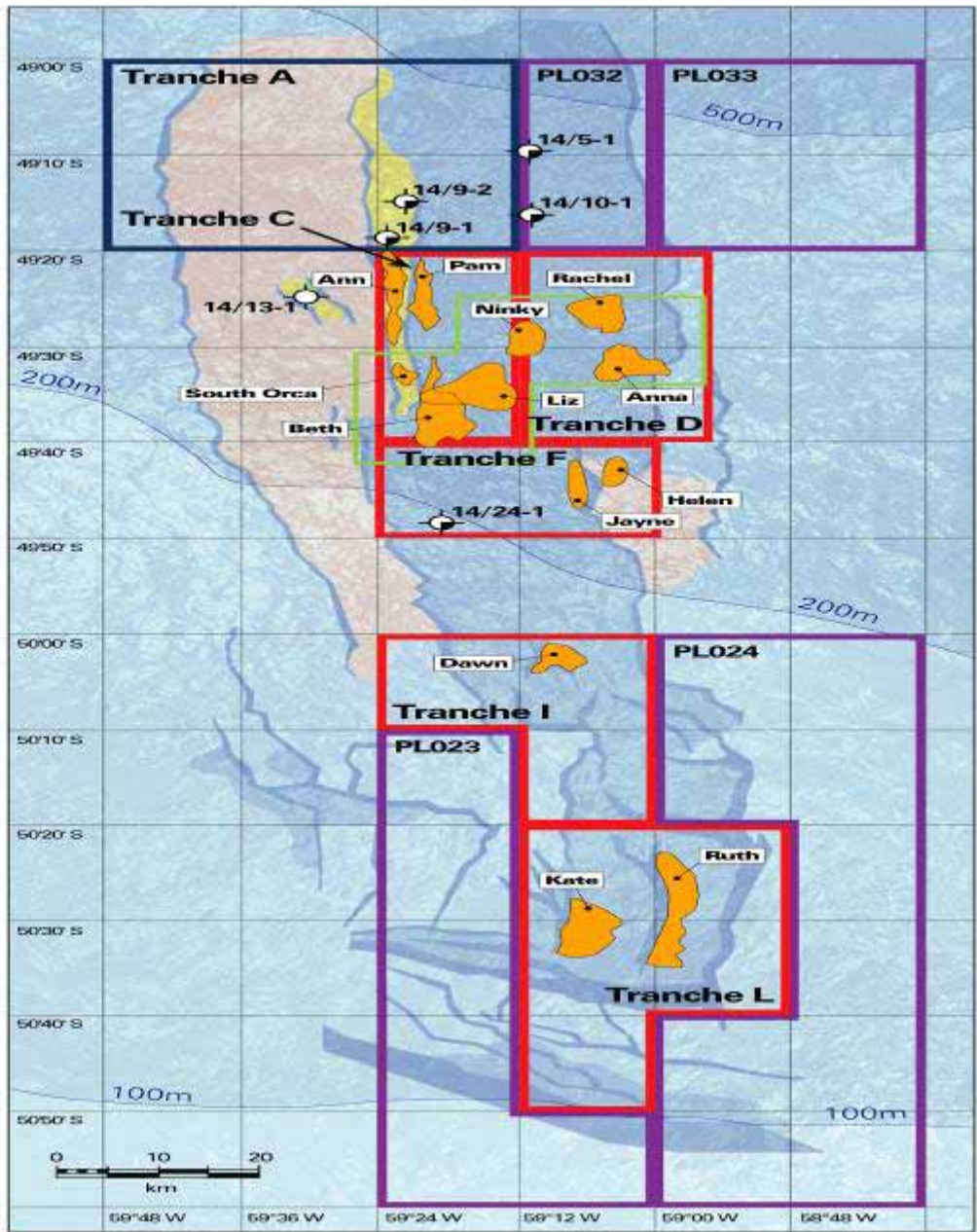
**Desire Petroleum plc**



**FALKLAND  
BASINS**

 Desire  
Licences

*Desire*



**NORTH FALKLAND BASIN**

**Licensed Tranches and Prospects**

- Desire operated Tranches
- Evergreen operated Tranches
- Rockhopper operated Tranches
- 3D Seismic Survey Area
- Prospects
- 100m Water Depth

*Desire*

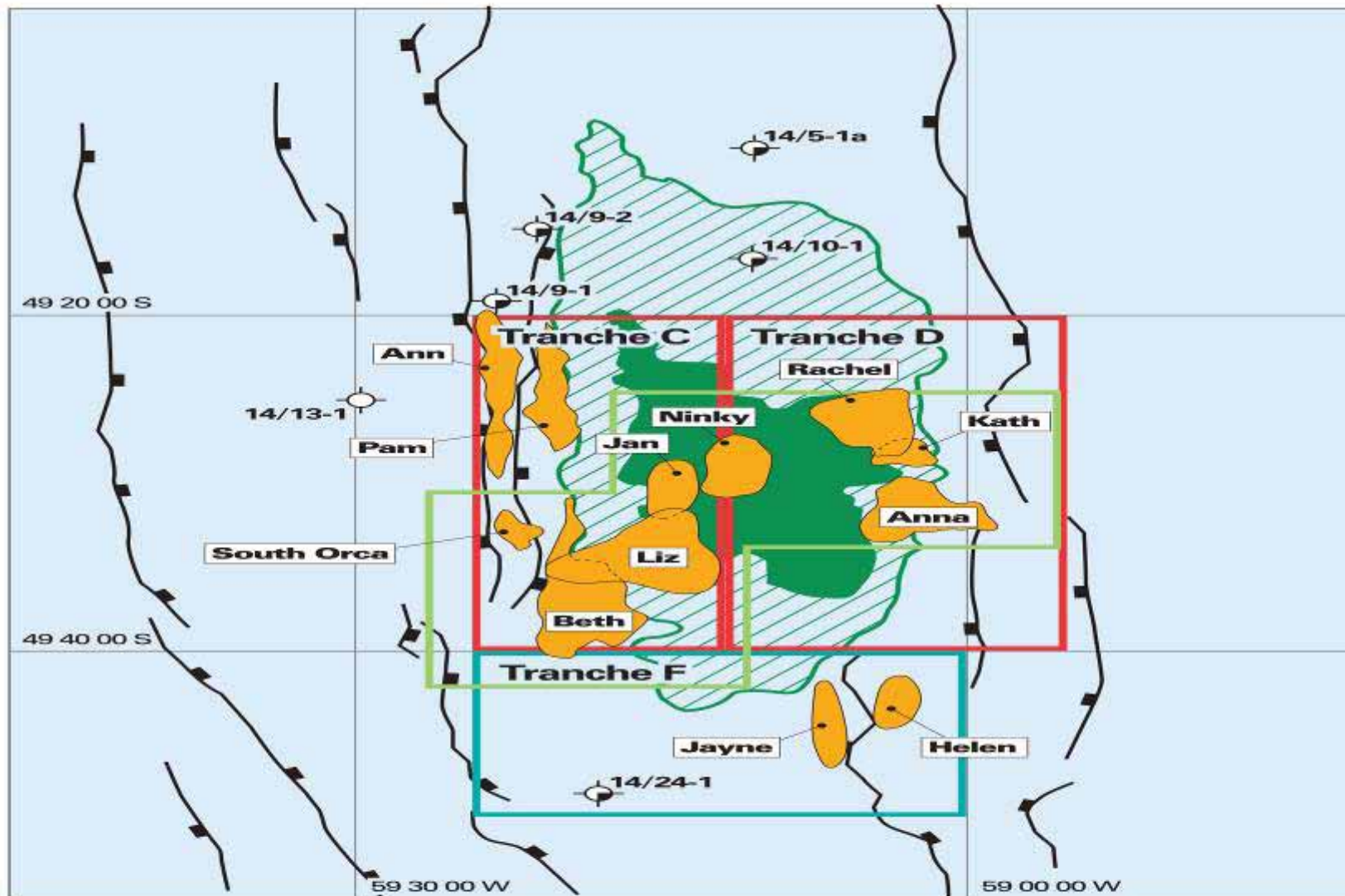
*Desire*

AGE		LITHOLOGY	DEPTH	WELL TARGETS
		WATER		
	TERTIARY		1000 M	
	UPPER CRETACEOUS			
LOWER CRETACEOUS	APTIAN		2000 M	Ann
	MD-BARREMIAN		SOURCE 	Rachel
				Ninky
	LWR. BAER			Liz A,B,C Primary
BETH. BAER			Beth A,B,C Primary	
	EARLY CRET.		3000 M	Liz, Beth, Secondary
PRE-CRETAC. SOLS				

# NORTH FALKLAND BASIN

## Hydrocarbon Kitchen & Prospects

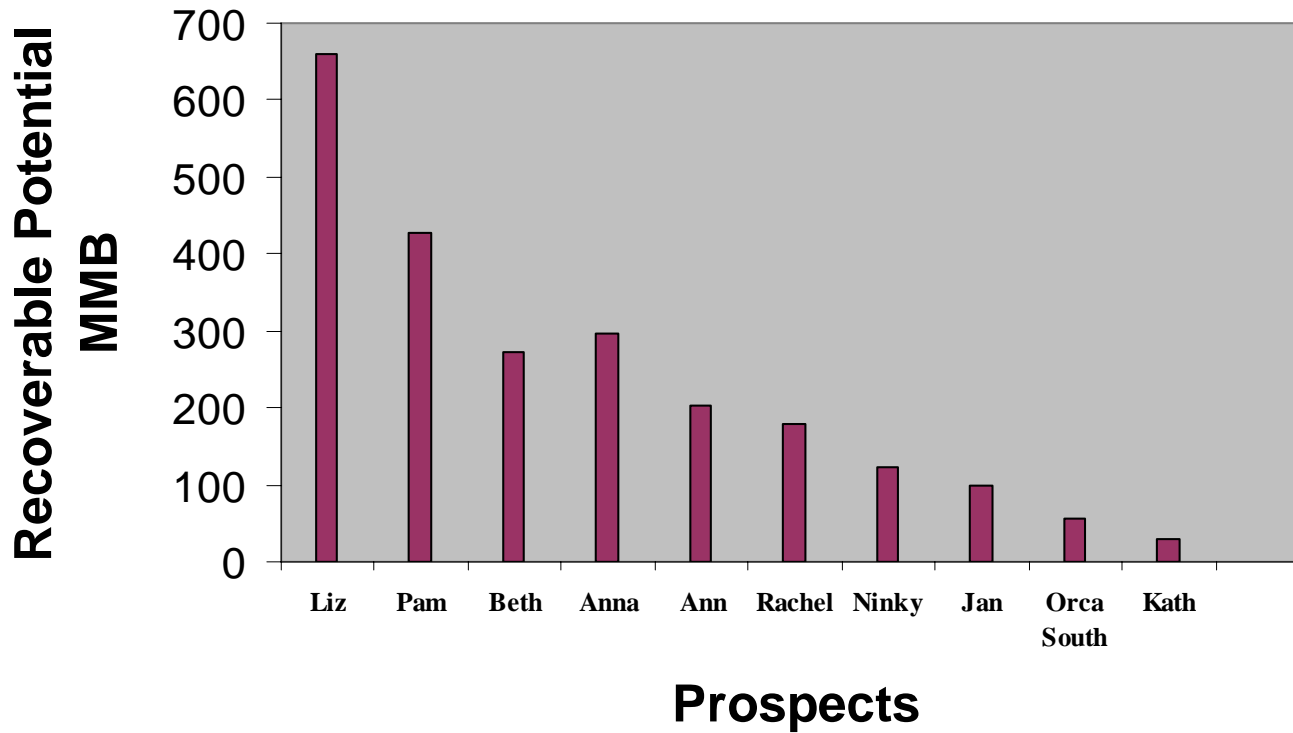
*Desire*



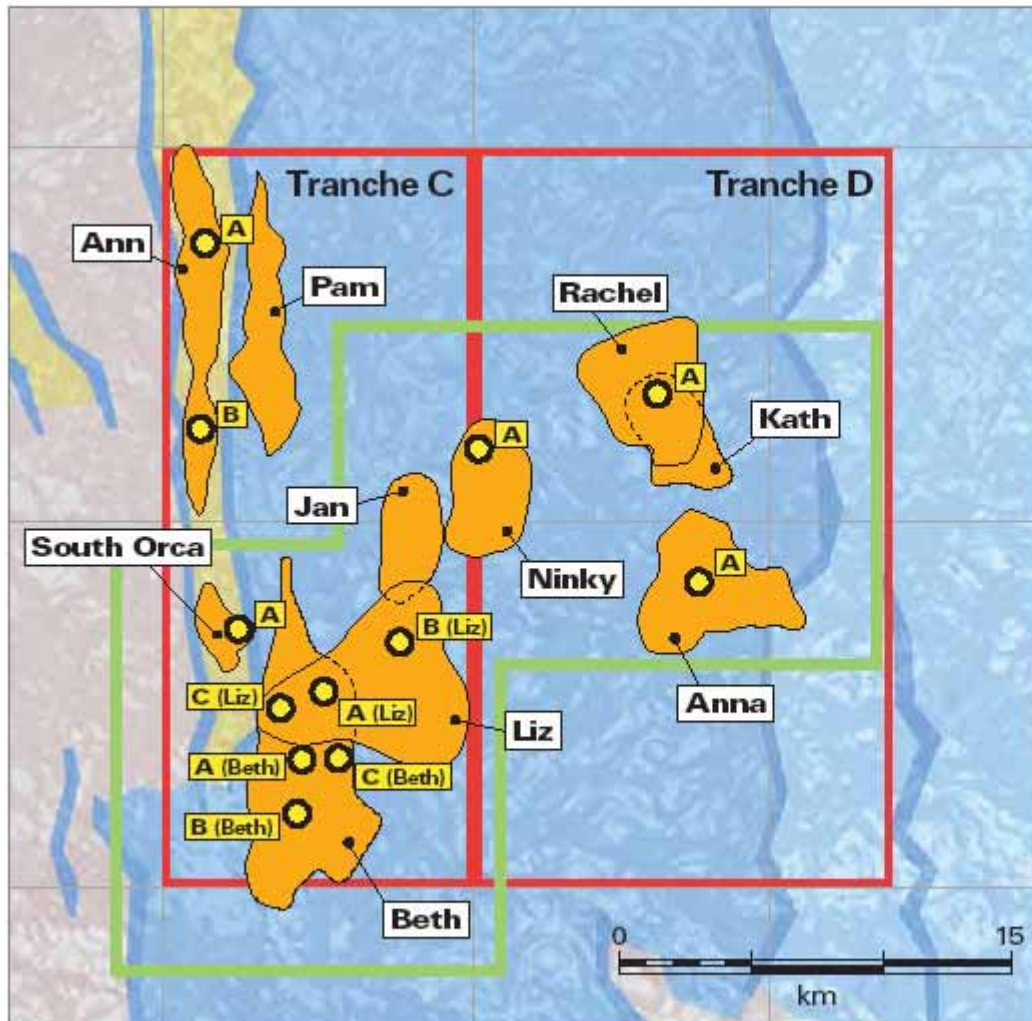
- |   |                   |   |                 |
|---|-------------------|---|-----------------|
|  | Mature for oil    |  | Prospects       |
|  | Peak oil maturity |  | 3D Seismic Area |



## Tranches C & D Volumetrics



Most Likely Unrisked Recoverable Potential 2.3 billion barrels



## NORTH FALKLAND BASIN Possible Drilling Locations

 Tranches C & D  
Desire 92.5%  
Rockhopper 7.5%

 3D Seismic  
Survey Area

 Prospects

 Drilling  
location

*Desire*

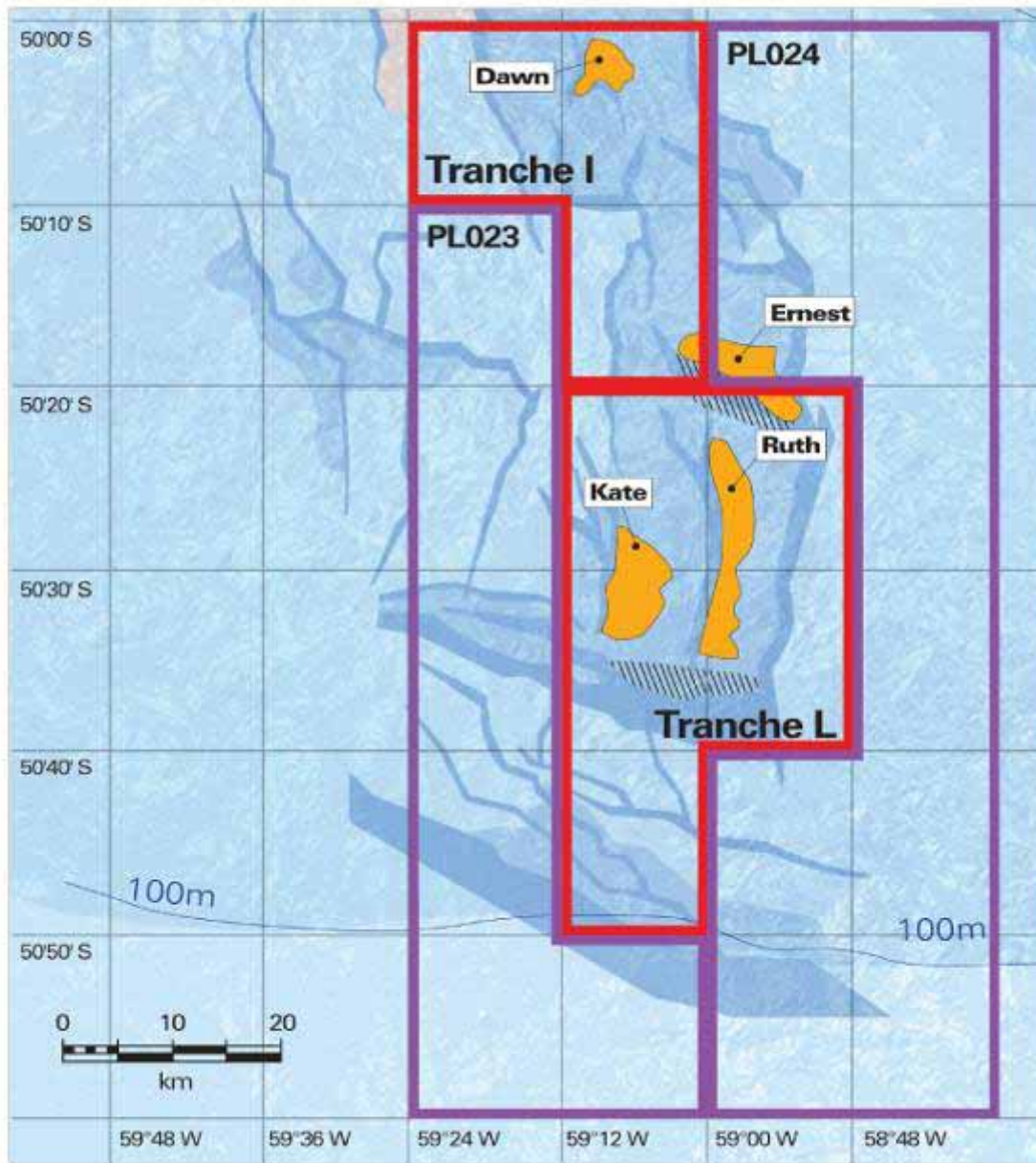
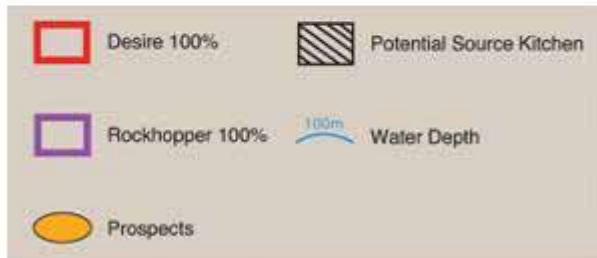
*Desire*

**Operations Update**

**Tranches C and D**

- **Ready to drill at 12 locations**
- **12 site surveys**
- **Environmental Impact Assessment approved**
- **Wellheads and tubulars for 4 x 3,000m wells ready to use**
- **Geological well plans and well design complete**

*Desire*



*Desire*

## **ENVIRONMENTAL IMPACT ASSESSMENT**

### **PURPOSE**

- **Identify potential risks and assess potential impacts.**
- **Identify and meet all regulatory requirements.**
- **Understand natural environment.**
- **Develop control measure – strict operational procedures and good housekeeping – to prevent any potentially damaging effects.**
- **Identify appropriate contingency plans eg Oil Spill Contingency Plan.**

*Desire*

**Tranches F, I and L**

**Work in Progress**

- **Add prospects to drilling inventory**
- **Complete AVO studies and seismic re-mapping**
- **EIA in Tranches I and L underway**
- **Acquire site survey data**