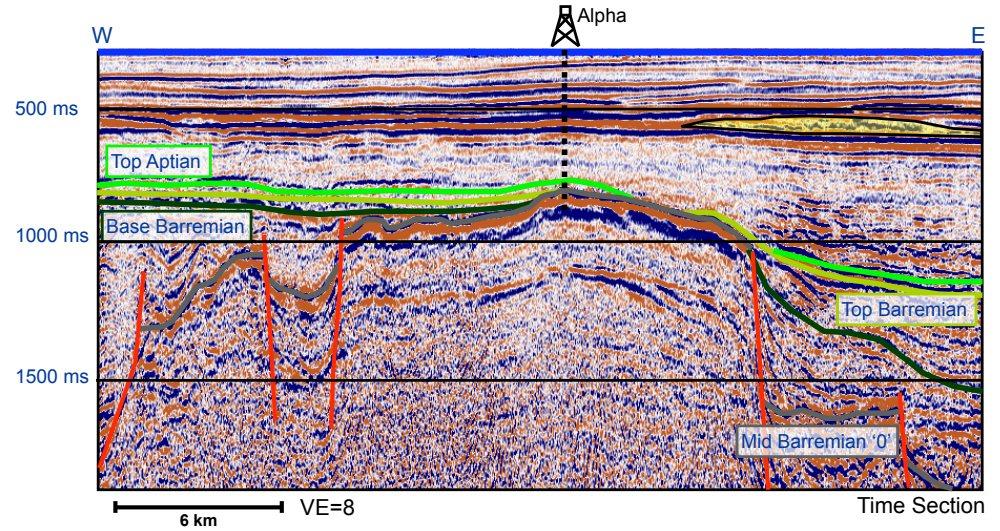
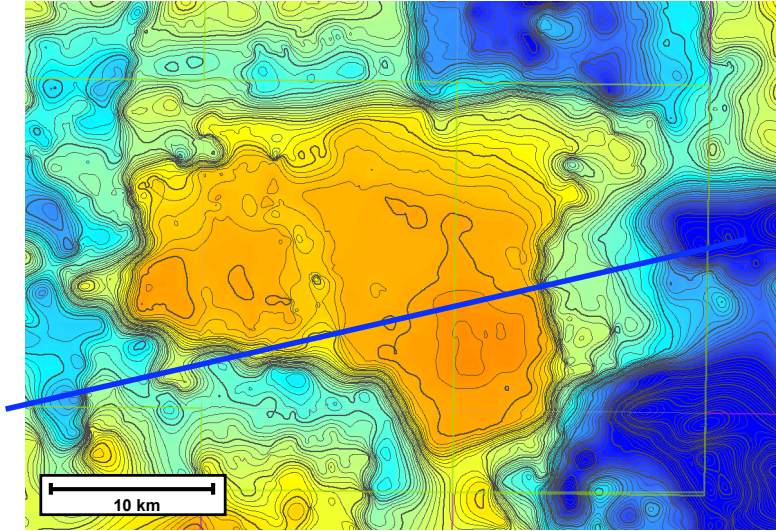


Alpha Prospect Summary



Top Pre-Rift Depth Map, PGL 2007

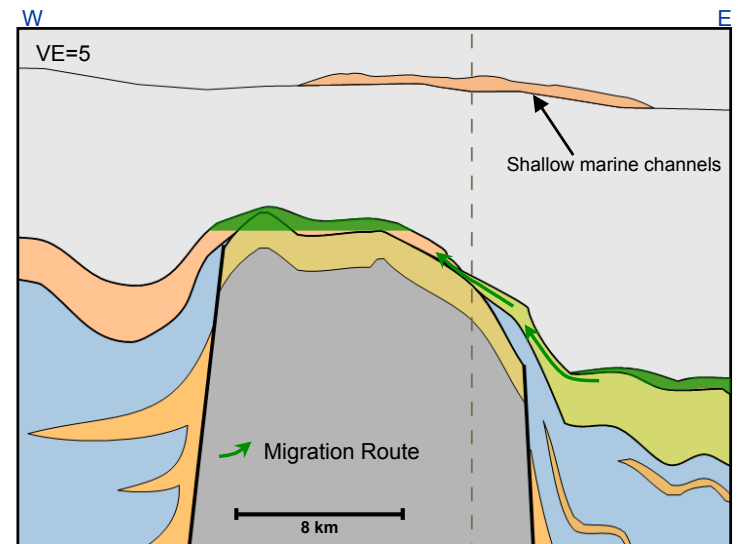
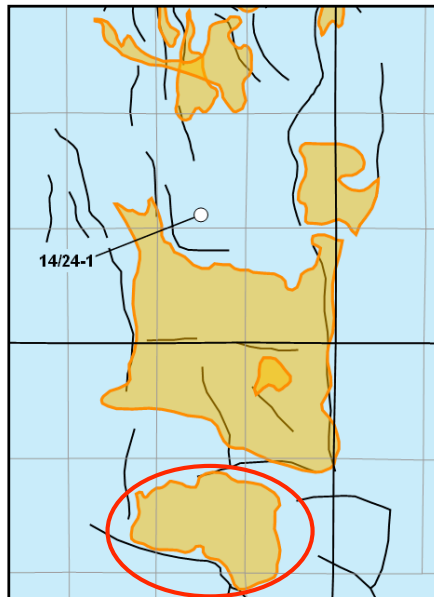


Alpha	Charge	Reservoir	Trap	COS
Presence	1.0	0.7	1.0	Seismic modifier = 1.5
Effectiveness	0.2	0.9	0.3	
Combined	0.2	0.63	0.3	6%

Alpha	P90	P50	P10	Mean
STOIIIP (MMbo)	1,770	5,400	13,881	6,845
Reserve (MMbo)	297	1,104	3,566	1,613

Senergy CPR September 2009

COS = the chance to find the P90 volume and that hydrocarbons will flow to surface on test



- Aptian sands
- Barremian sands
- Syn-Rift sands
- Seal (immature source)
- Source (mature)
- Potential syn-rift source and/or semi-regional seal