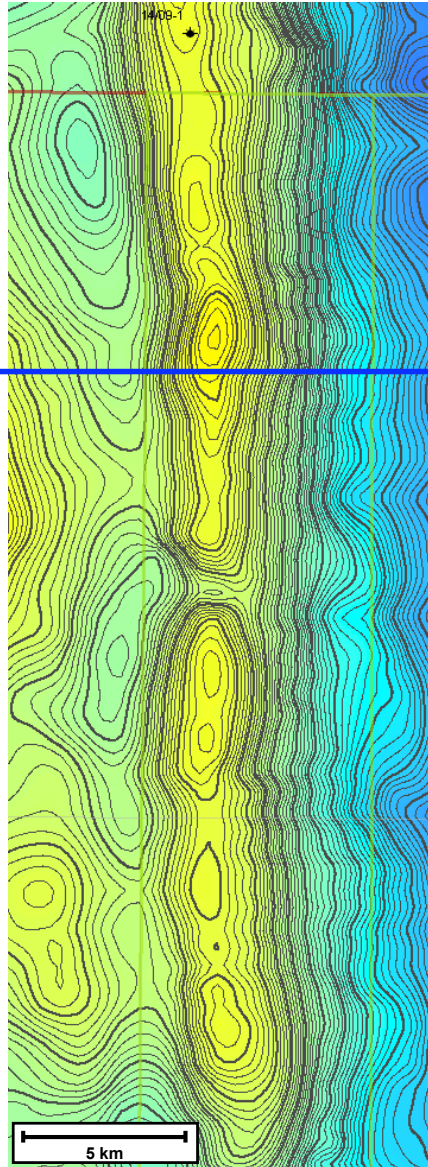
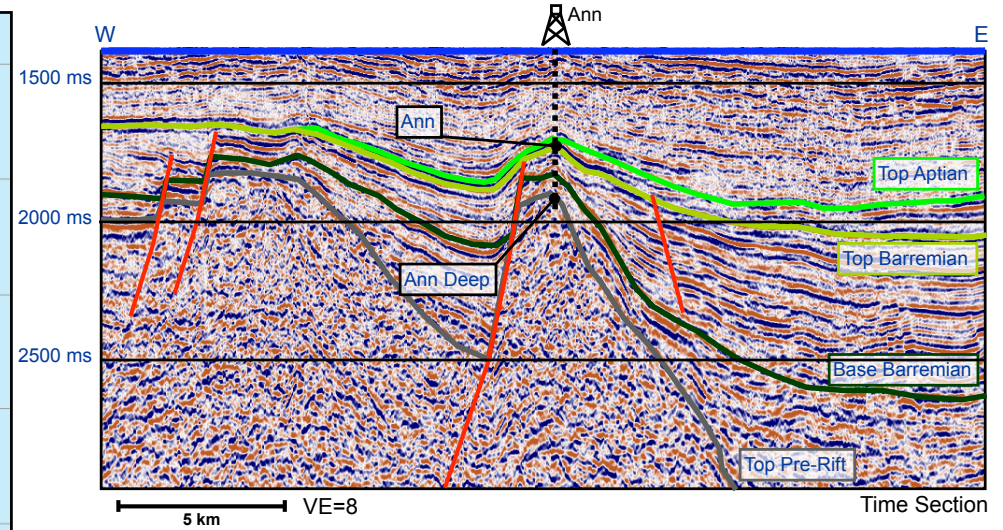
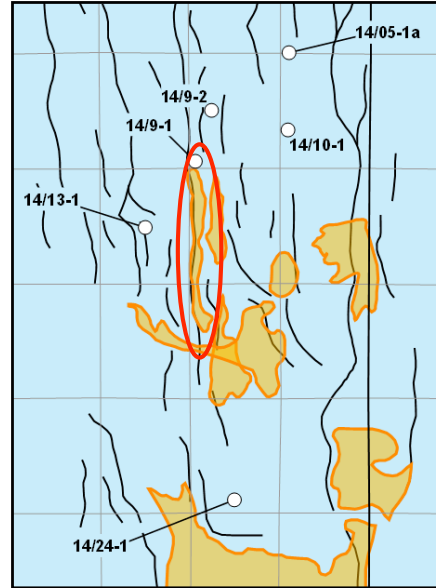


## Ann Deep Prospect Summary



Top Pre-Rift Depth (Senergy, 2009)

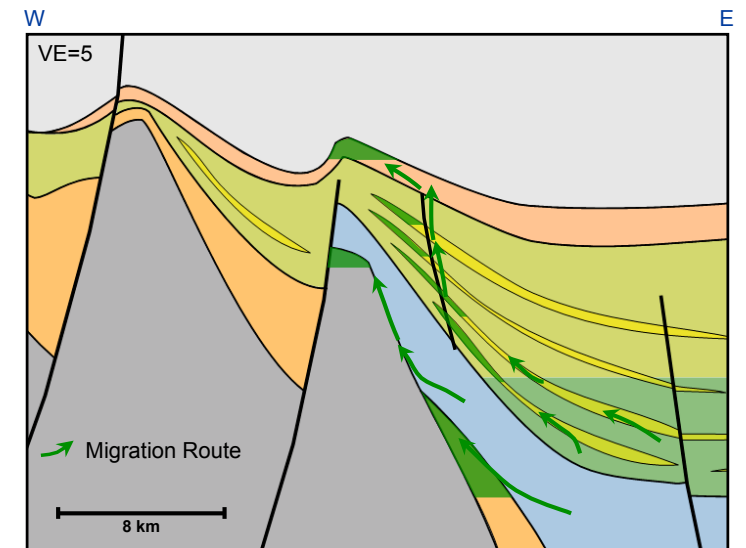


<i>Ann Deep</i>	Charge	Reservoir	Trap	COS
Presence	1.0	1.0	1.0	
Effectiveness	0.25	0.5	0.9	
<b>Combined</b>	<b>0.25</b>	<b>0.5</b>	<b>0.9</b>	<b>11%</b>

<i>Ann Deep</i>	Low	Base	High	Mean
STOIIP (MMbo)	71	173	346	194
Reserve (MMbo)	16	46	117	59

Senergy CPR September 2009

COS = the chance to find the P90 volume and that hydrocarbons will flow to surface on test



- Aptian sands
- Barremian sands
- Syn-Rift sands
- Seal (immature source)
- Source (mature)
- Potential syn-rift source and/or semi-regional seal