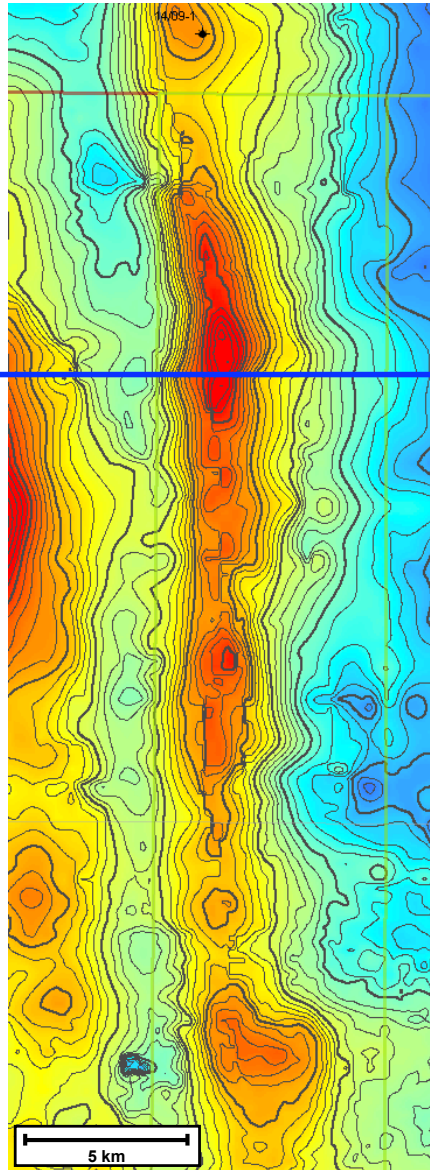
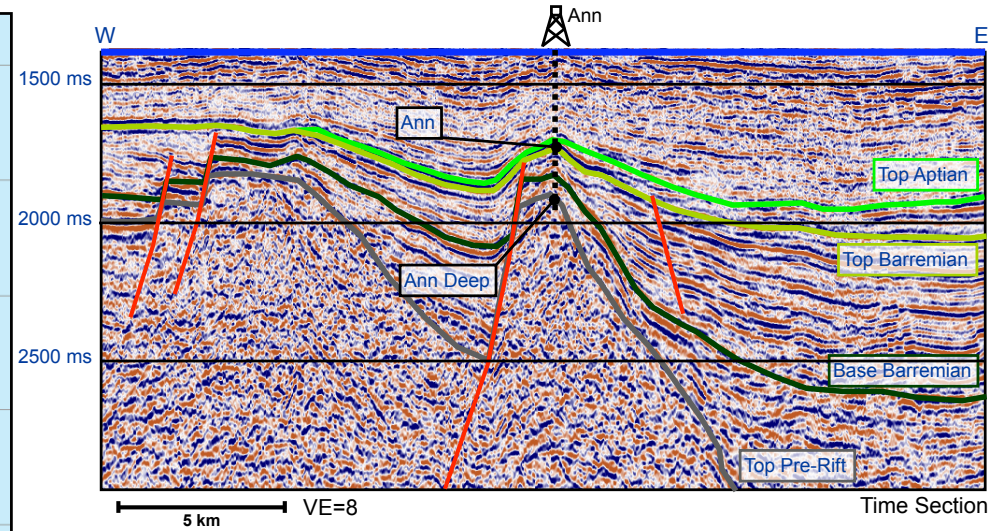
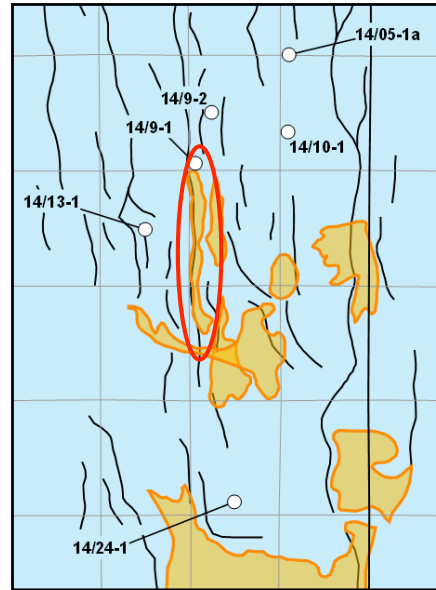


Ann Prospect Summary



Aptian Depth (PGL, 2007)

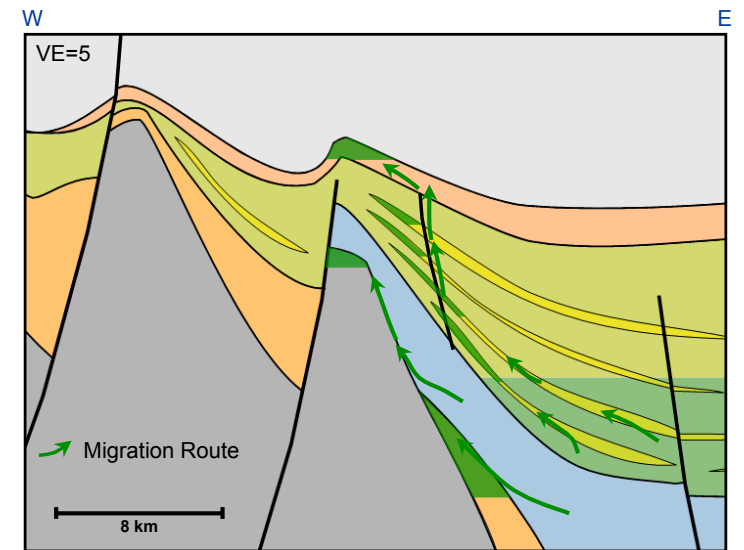


<i>Ann</i>	Charge	Reservoir	Trap	COS
Presence	1.0	1.0	1.0	Seismic Modifier = 1.5
Effectiveness	0.25	0.7	0.9	
Combined	0.25	0.7	0.9	18%

<i>Ann</i>	P90	P50	P10	Mean
STOIIP (MMbo)	174	456	911	507
Reserve (MMbo)	30	122	308	154

Senergy CPR September 2009

COS = the chance to find the P90 volume and that hydrocarbons will flow to surface on test



- Aptian sands
- Barremian sands
- Syn-Rift sands
- Seal (immature source)
- Source (mature)
- Potential syn-rift source and/or semi-regional seal