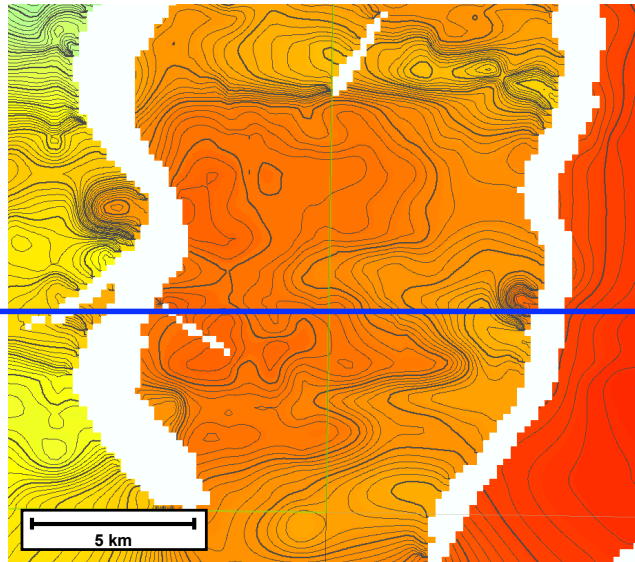
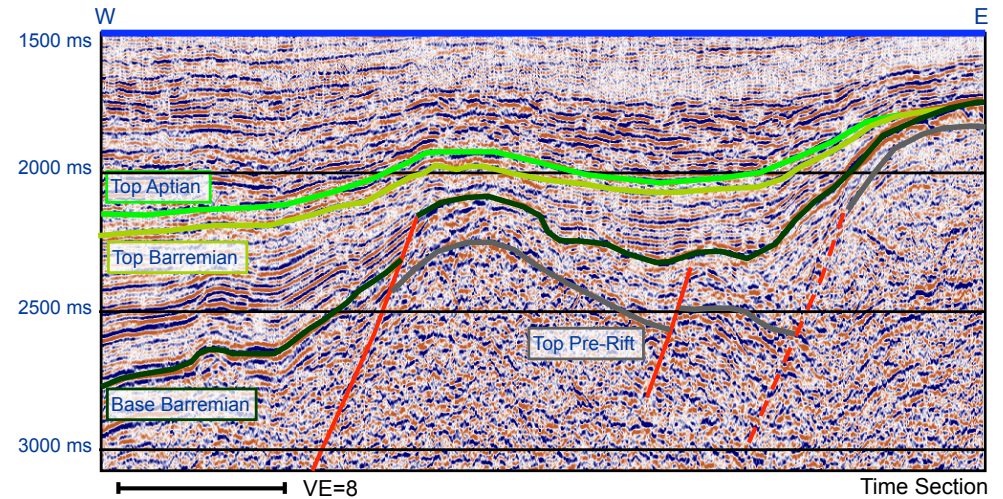


Helen Deep Prospect Summary



Top Pre-Rift, Senergy 2009

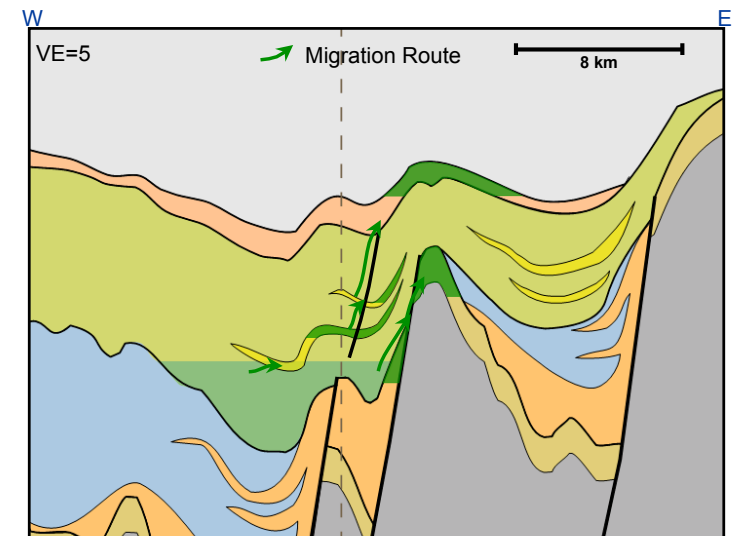
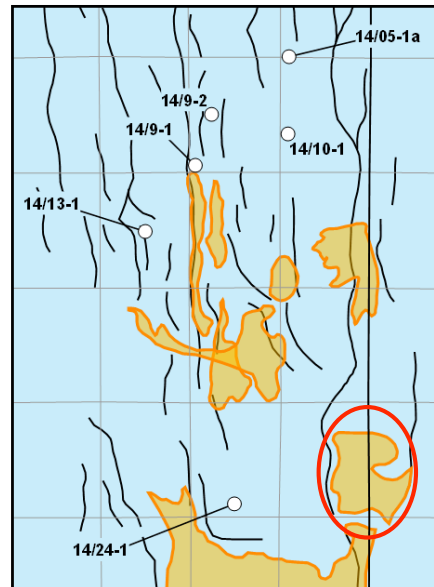


<i>Helen Deep</i>	Charge	Reservoir	Trap	COS
Presence	1.0	0.6	0.75	
Effectiveness	0.5	0.8	0.6	
Combined	0.5	0.48	0.45	11%

<i>Helen Deep</i>	P90	P50	P10	Mean
STOIIP (MMbo)	168	791	2,230	1,034
Reserve (MMbo)	45	235	788	344

Senergy CPR September 2009

COS = the chance to find the P90 volume and that hydrocarbons will flow to surface on test



- Aptian sands
- Barremian sands
- Syn-Rift sands
- Seal (immature source)
- Source (mature)
- Potential syn-rift source and/or semi-regional seal