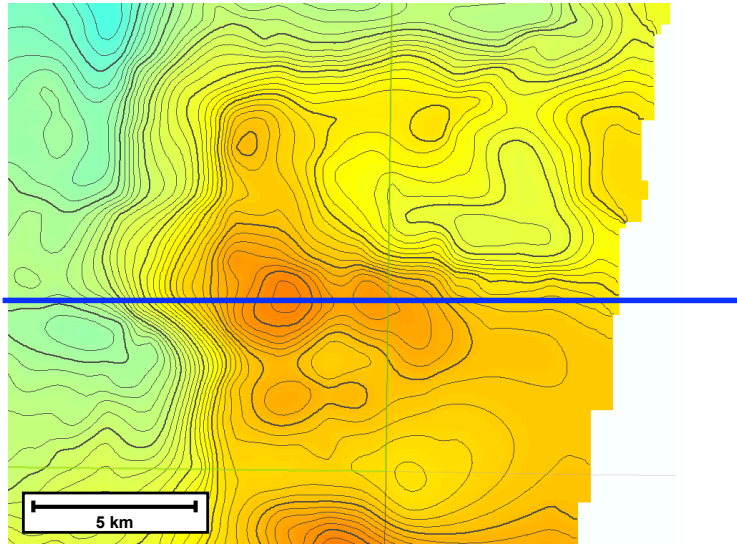
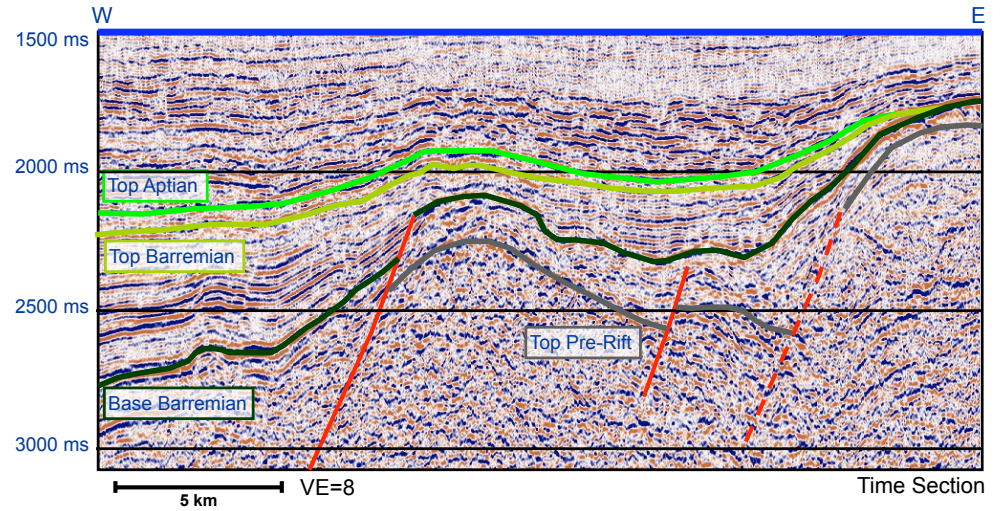


Helen Prospect Summary



Top Aptian Depth, Senergy 2009

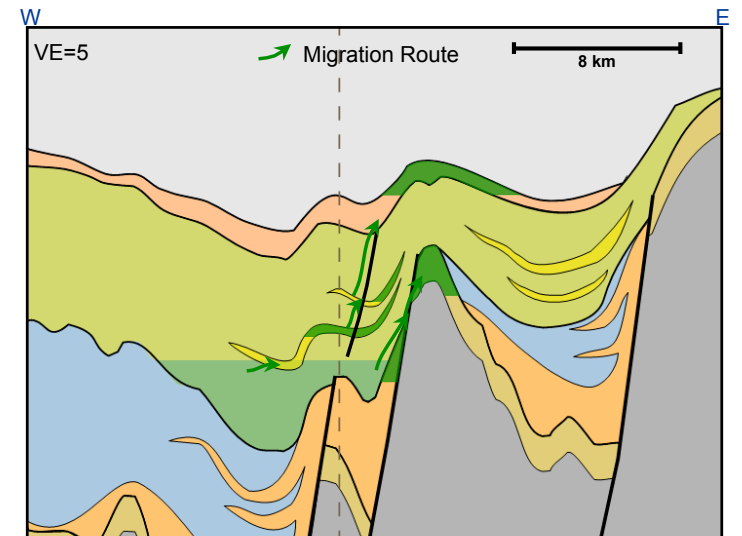
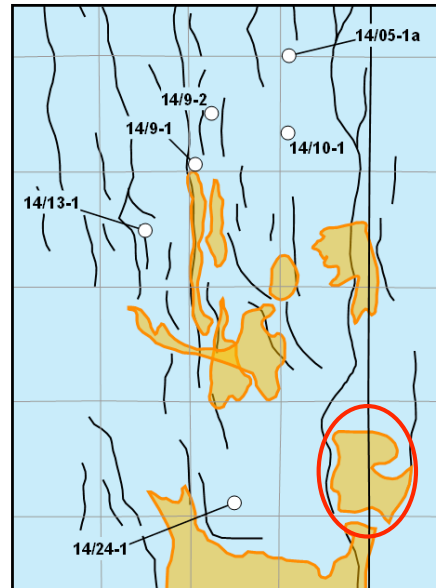


<i>Helen</i>	Charge	Reservoir	Trap	COS
Presence	1.0	0.6	1.0	
Effectiveness	0.25	0.7	0.9	
Combined	0.25	0.42	0.9	

<i>Helen</i>	P90	P50	P10	Mean
STOIIP (MMbo)	75	205	460	244
Reserve (MMbo)	18	59	155	76

Senergy CPR September 2009

COS = the chance to find the P90 volume and that hydrocarbons will flow to surface on test



- Aptian sands
- Barremian sands
- Syn-Rift sands
- Seal (immature source)
- Source (mature)
- Potential syn-rift source and/or semi-regional seal