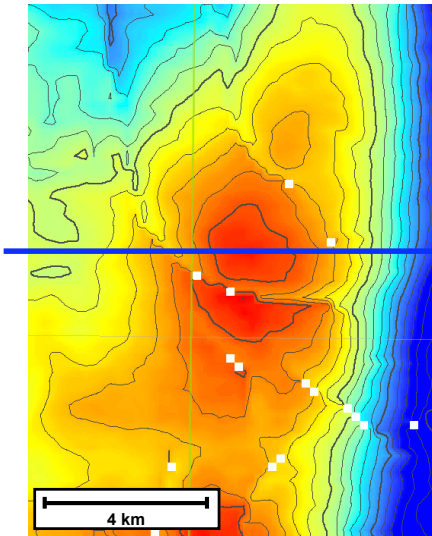
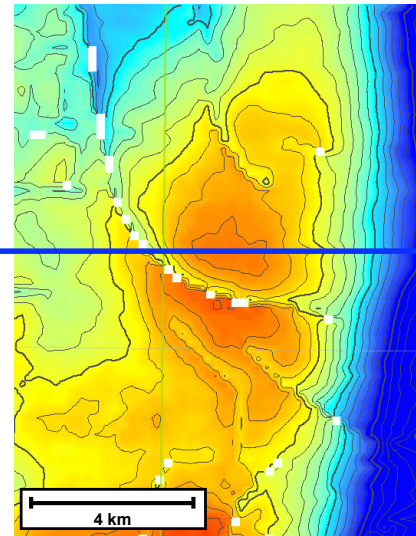


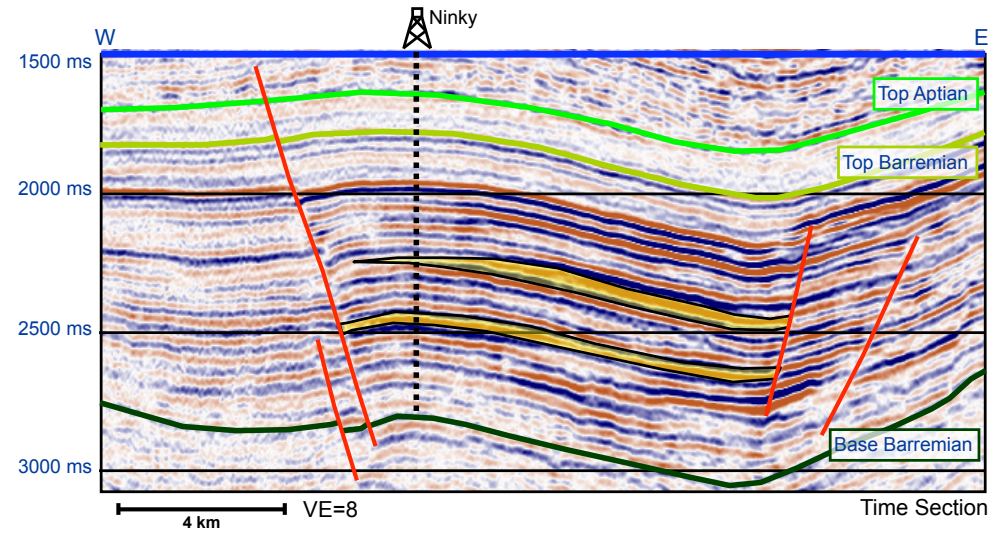
Ninky Prospect Summary



Mid Barremian '0' Depth Map



Mid Barremian '1' Depth Map

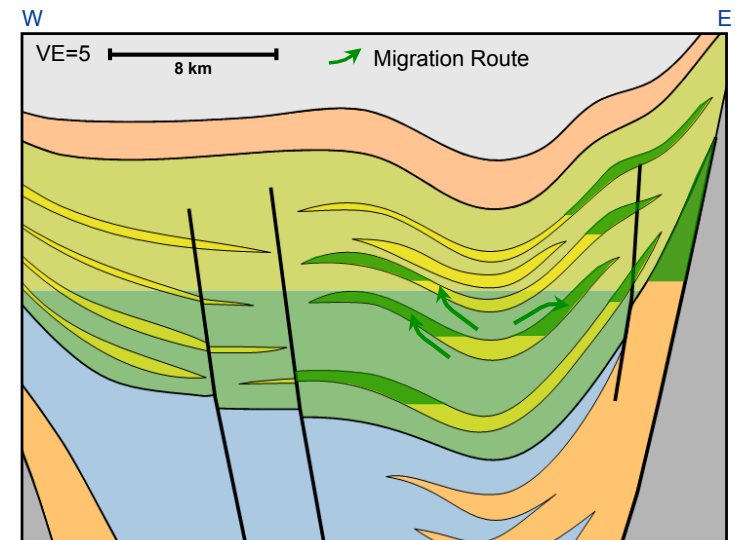
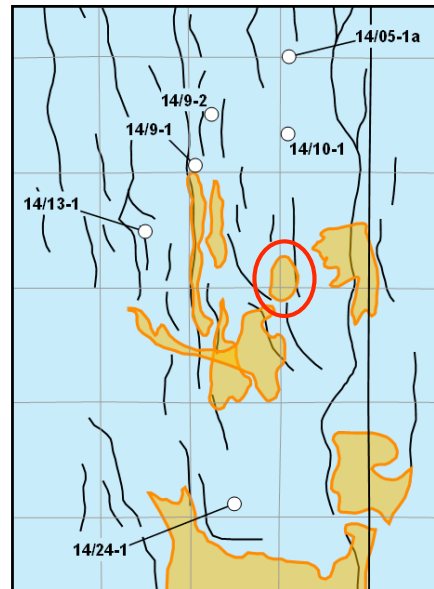


<i>Ninky</i>	Charge	Reservoir	Trap	COS
Presence	1.0	0.8	0.7	
Effectiveness	0.6	0.8	1.0	
Combined	0.6	0.64	0.7	27%

<i>Ninky</i>	P90	P50	P10	Mean
STOIIP (MMbo)	148	354	716	400
Reserve (MMbo)	34	94	224	122

Senergy CPR September 2009

COS = the chance to find the P90 volume and that hydrocarbons will flow to surface on test



- Aptian sands
- Seal (immature source)
- Barremian sands
- Source (mature)
- Syn-Rift sands
- Potential syn-rift source and/or semi-regional seal