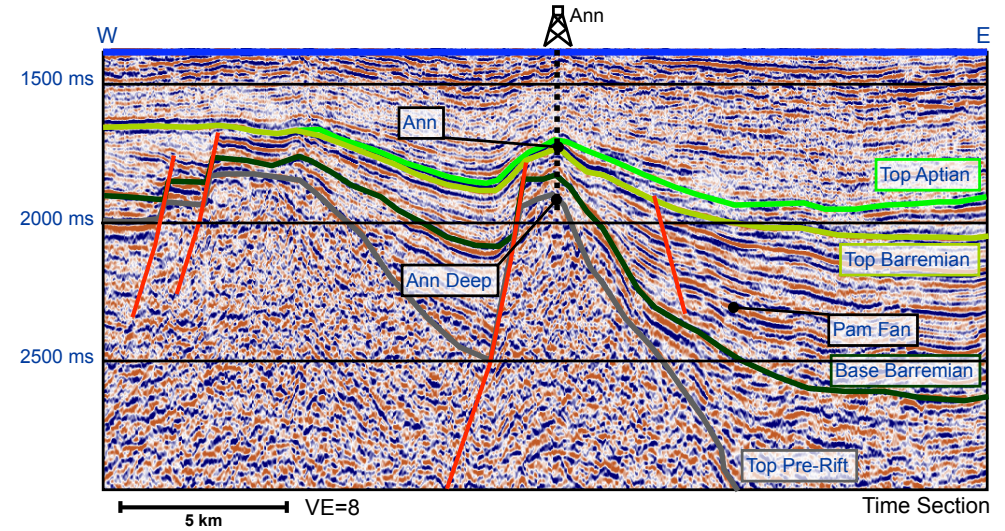
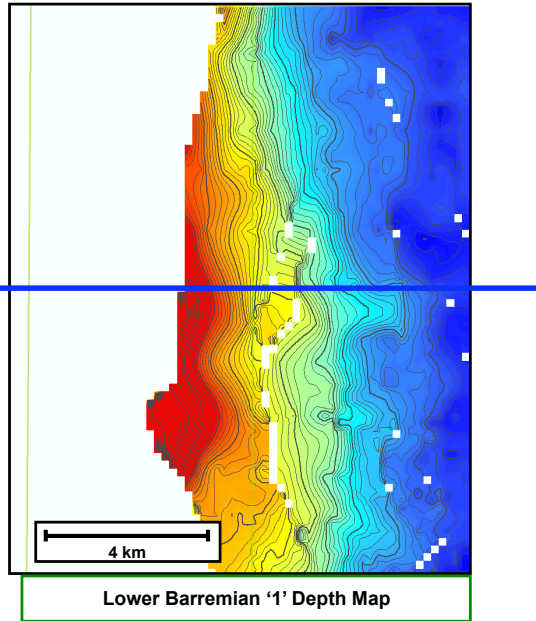


## Pam Prospect Summary

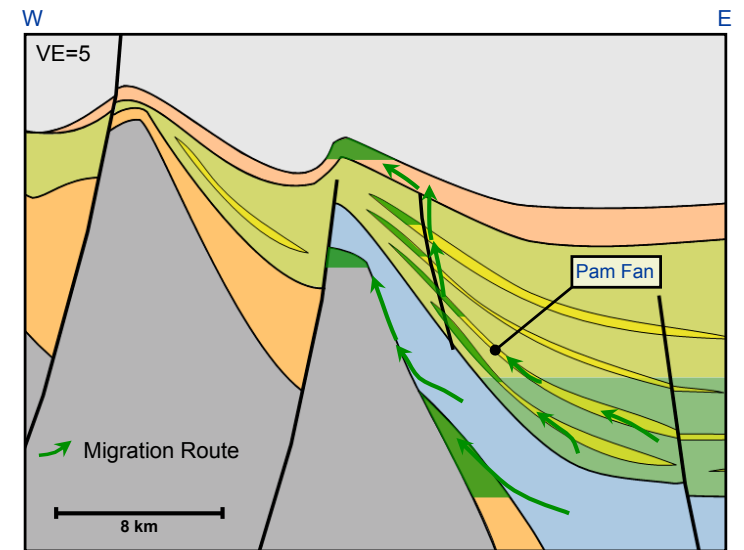
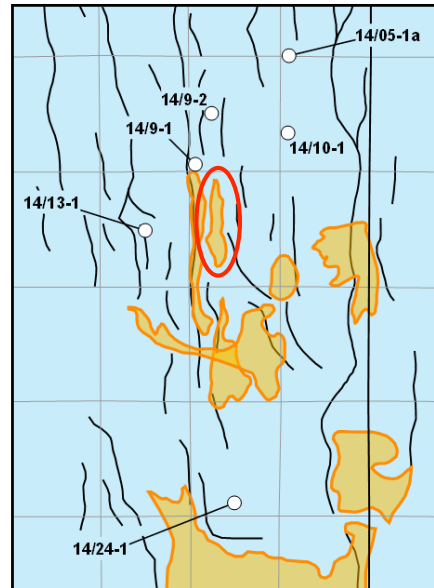


Pam	Charge	Reservoir	Trap	COS
Presence	1.0	0.6	0.8	
Effectiveness	0.8	0.8	0.35	
<b>Combined</b>	<b>0.8</b>	<b>0.48</b>	<b>0.28</b>	<b>11%</b>

Pam	P90	P50	P10	Mean
STOIIIP (MMbo)	168	480	1,081	569
Reserve (MMbo)	<b>41</b>	<b>135</b>	<b>358</b>	<b>174</b>

Senergy CPR September 2009

COS = the chance to find the P90 volume and that hydrocarbons will flow to surface on test



- Aptian sands
- Barremian sands
- Syn-Rift sands
- Seal (immature source)
- Source (mature)
- Potential syn-rift source and/or semi-regional seal